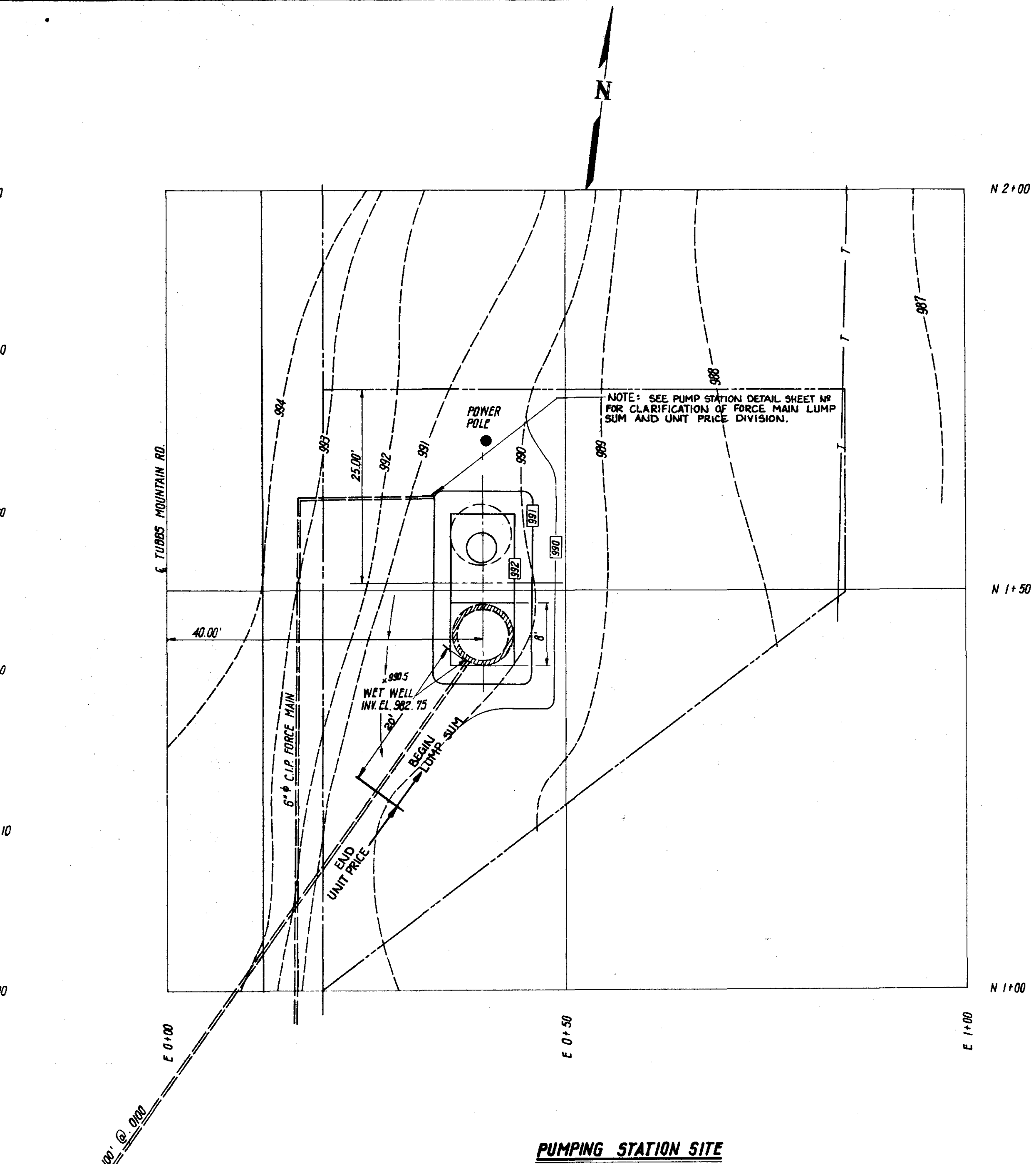


**EJECTOR STATION SITE**  
**STATE PARK ROAD**  
 SCALE: 1" = 5'

NOTE: GRADE TO DRAIN



**PUMPING STATION SITE**  
**TUBBS MOUNTAIN ROAD**  
 SCALE: 1" = 10'

BOOK 4 V PAGE 79

**PRINTED**  
 DEC 1 1970

DAVIS AND FLOYD ENGINEERS, INC. CONSULTING ENGINEERS GREENWOOD, S. C.      ATLANTA, GA.	OWNER <b>TOWN OF TRAVELERS REST, S. C.</b>	TITLE <b>PUMPING STATION &amp; EJECTOR STATION SITES</b>	DESIGNED: P.R.F.	SCALE: AS SHOWN	CONTRACT NO. 294
			DRAWN: G.F.		DATE: JULY 1968
			CHECKED:	REVISIONS	BY
			APPROVED:	DATE	